



# MONTHLY MEMBERSHIP PROGRESS REPORT

District 128

Results as of: 3/31/2016

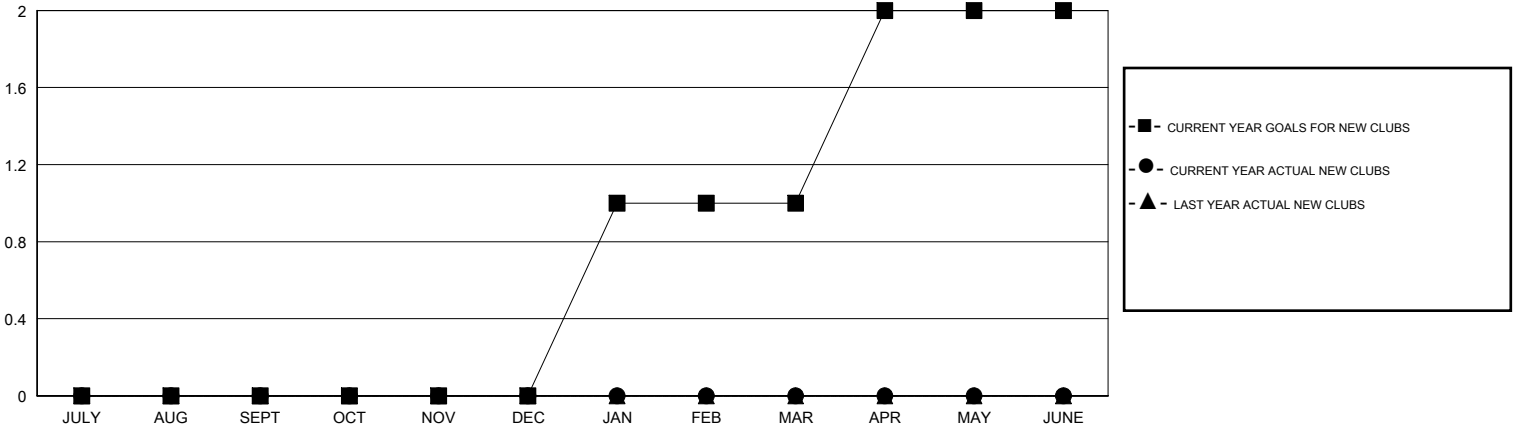
GMT: Ton Soeters

LOCATION ISRAEL

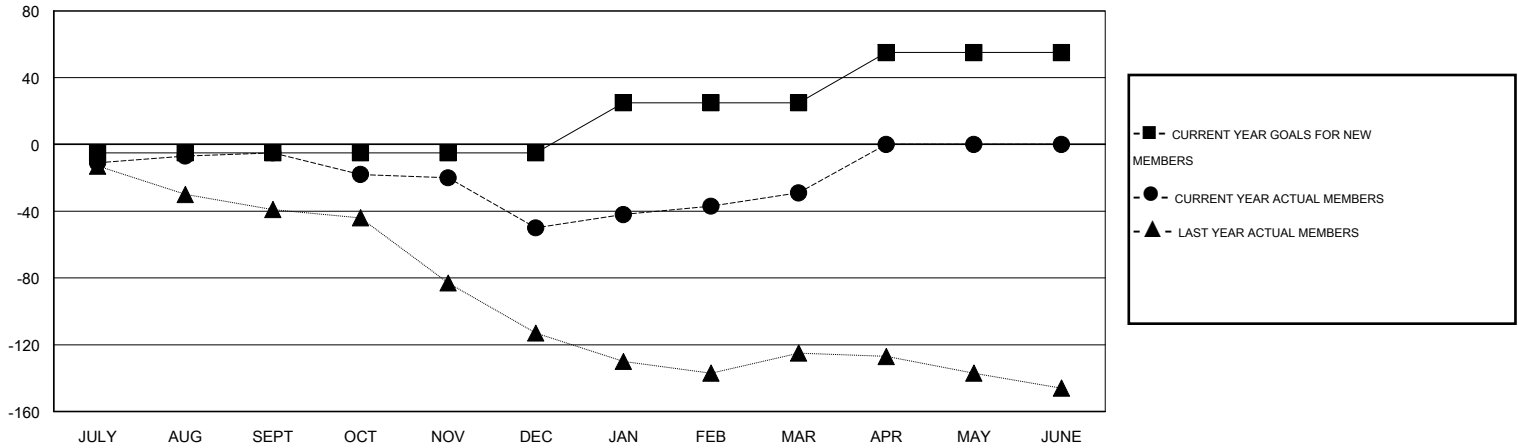
GMT CA 4

Clubs					Members				
RESULTS FOR 2015-2016					RESULTS FOR 2015-2016				
QUARTER	NEW CLUB GOAL	NEW CLUBS	DROPPED CLUBS	NET GAIN/LOSS	QUARTER	NEW MEMBER GOAL	CHARTER AND NEW MEMBERS ADDED	DROPPED MEMBERS	NET GAIN/LOSS
JULY/AUG/SEPT	0	0	1	-1	JULY/AUG/SEPT	-5	20	25	-5
OCT/NOV/DEC	0	0	1	-1	OCT/NOV/DEC	0	2	47	-45
JAN/FEB/MAR	1	0	1	-1	JAN/FEB/MAR	30	29	8	21
APR/MAY/JUNE	1	0	0	0	APR/MAY/JUNE	30	0	0	0

GOALS AND ACTUAL NEW CLUBS CUMULATIVE



GOALS AND ACTUAL MEMBERS CUMULATIVE



DROPPED CLUBS: 3	13 CLUBS OF 31 ADDED 1 OR MORE NEW MEMBERS	<u>GENDER DISTRIBUTION</u>	
		MALE	368 (44.77%)
<u>DROPPED MEMBERS</u>		FEMALE	454 (55.23%)
DECEASED	4	<a href="#">CLICK HERE FOR HEALTH ASSESSMENT DATA</a>	
CLUB CANCELLED	23		
OTHER	53		
TOTAL	80		
		FAMILY UNIT MEMBERS	512
		HEAD OF HOUSEHOLD	256
		NON-HEAD OF HOUSEHOLD	256